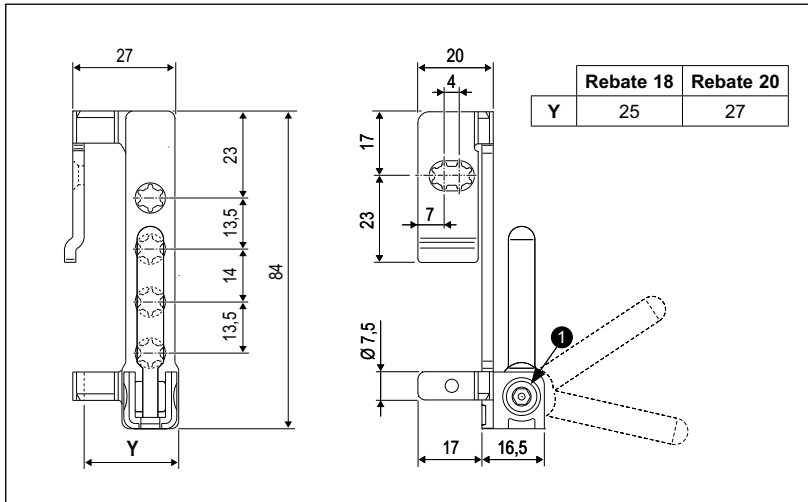
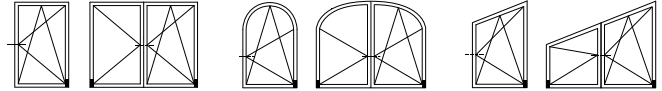
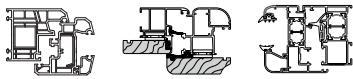


# Surface mounted corner support with resting plates



**Description**

Adjustable corner hinge support, right and left, to apply on the frame jamb. The positioning resting plates allow the immediate application of the support on the assembled frame without requiring a jig.

**Application**

For Tilt&Turn windows with 1 or 2 sashes. To use only when the inner part of the profile has an iron reinforcement and adequate mounting is ensured using the screws only.

It must be coupled with one of the following female components surface mounted system:

- surface mounted corner hinge, art. A50911.XX.XX;
- hinge for PVC, A50922.07.00.

**Adjustment**

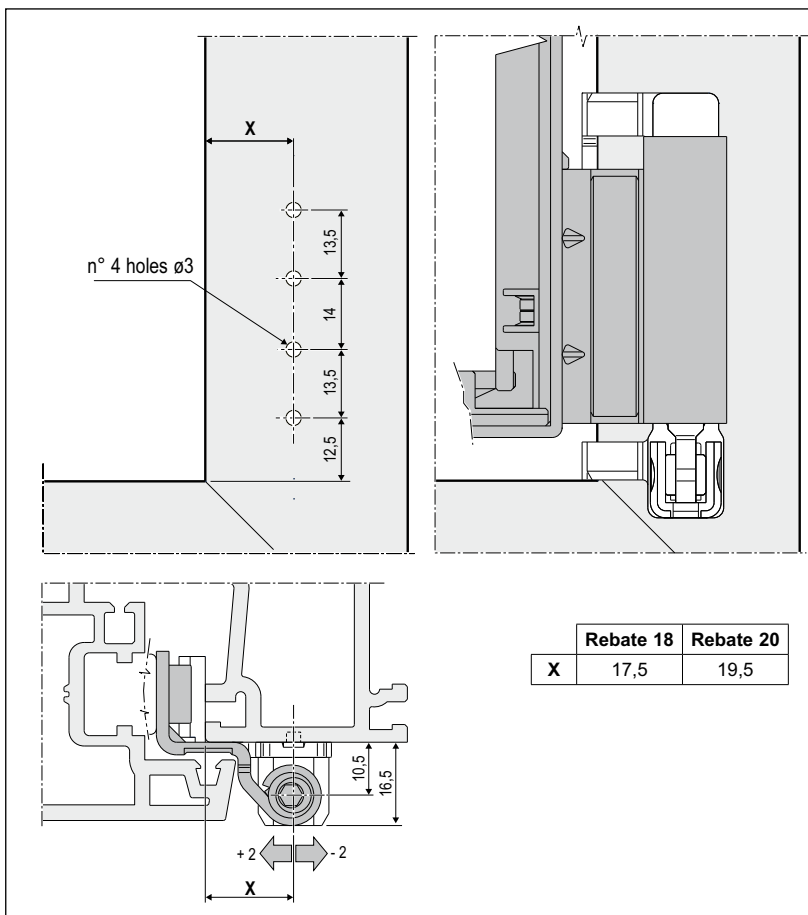
The following sash adjustments can be made using a 4 mm hexagonal wrench:

- horizontal adjustment  $\pm 2$  mm ①;
- pressure adjustment (on female part);
- vertical adjustment (on female part).

**Mounting**

Position the support against the bottom transom and side jamb, where it can be fixed directly or used as a dime for the guide holes.

3.5/4.3x25 mm screws, with thread suited to material used for frame construction.



**Order Specifications**

Article	Type	Rebate
A50818.07.01	rh	18
A50818.07.02	lh	18
A50820.07.01	rh	20
A50820.07.02	lh	20