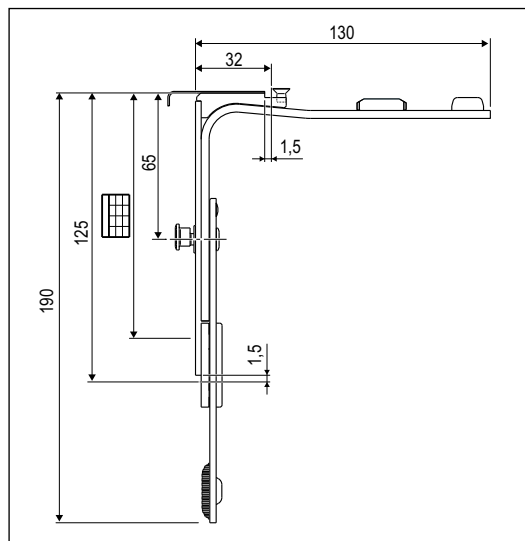
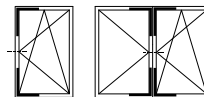


GR1 - 30x125 with 1 cam for parallel cut



Description

Connecting element for the movement from the jamb to the transom, in case of narrow sashes.

Adjustable mushroom cams as standard $\pm 1,5$ mm in height and ± 1 mm in pressure with 4 mm allen key, 18+18 mm stroke.

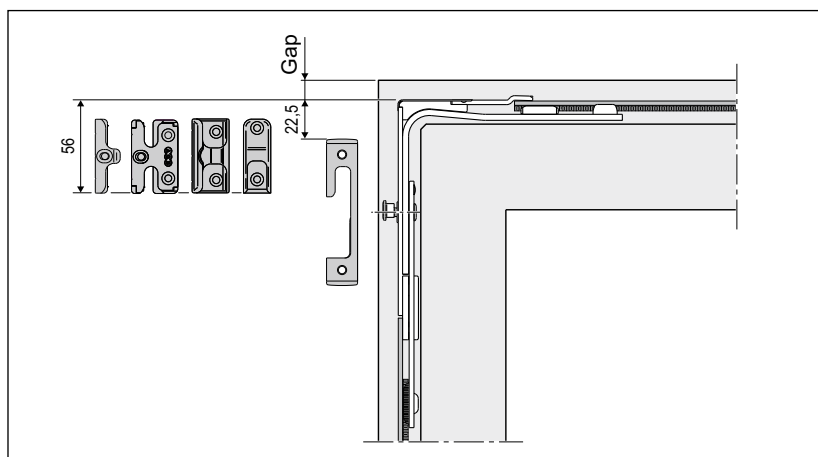
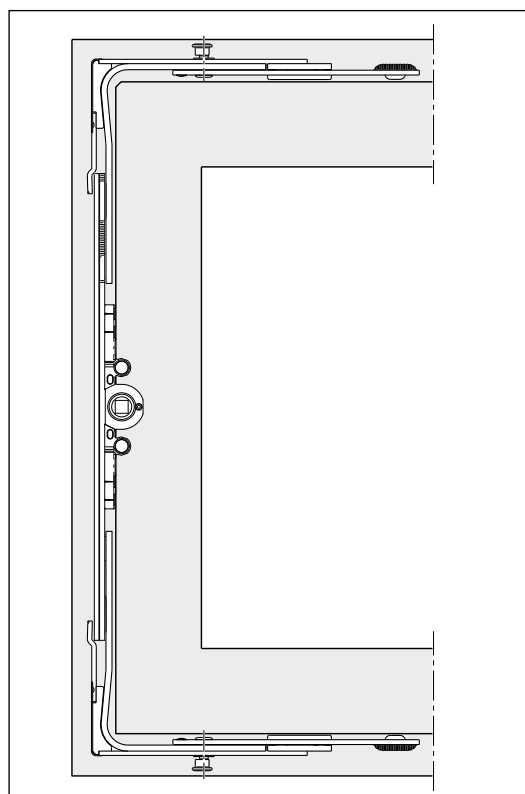
Application

Specific element to couple a component with parallel cut.

Mounting

Using a trilobal screw, fasten the cover plate for even cut to the corner drive in order to let the moveable rod correspond to the corner drive.

For windows and doors in PVC/Aluminium-wood/European groove aluminium: screws 3,5/4,3x25 mm with suitable thread for the material used for the building; for wooden windows and doors: screws from 3,5x35 mm to 4x40 mm.



Application range of the connectable components [mm]

GR	SRW				SRH									
	Stay arm (straight GR1 corner drive)	Stay arm (Inverted GR1 corner drive)	Espagnolette, fixed handle H								Espagnolette, variable handle H			
			Inverted top corner drive GR1	Top corner drive GR1	Inverted top corner drive GR1	Bottom corner drive GR1	Bottom corner drive GR1	Inverted corner drives GR1	Corner drives GR1					
	Min.	Max.	Min.	Max.	Min.	Max.	Min.	Max.	Min.	Max.	Min.	Max.	Min.	Max.
0	-	-	-	-	-	-	-	-	-	-	312	476	470	662
1	307	397	400	490	369♦	527	440	620	-	-	398	526	540	710
2	383	511	476	604	435	625	610	810	527	717	546	674	660	860
3	501	711	594	804	618	824	794	1010	711	917	622	1034	788	1220
4	701	911	794	1004	808	1024	994	1210	901	1117	1004	1424	1178	1610
5	901	1111	994	1204	1008	1224	1194	1410	1101	1317	1404	1824	1578	2010
6					1208	1424	1394	1610	1301	1517	1699	2324	1878	2510
7					1408	1624	1594	1810	1501	1717				
7bis*					1460	1624	1634	1810	1553	1717				
8*					1614	1924	1794	2110	1707	2017				
9*					1808	2124	1994	2310	1901	2217				
10*					2008	2324	2194	2510	2101	2417				

* Handle height 1050 mm.

♦ Remove the steel clip of espagnolette to obtain a SRH of 357 mm.

Screw hole position

GR1		
	Ref B-A	Ref B-C
1°	107	120
2°	131	-

Order Specifications

GR	Article					
1	A50302.01.03	307-1111	440-2510 *	123,5x30,5	1	* Use of extensions excluded