

20x188 mm striker - round ends



Description

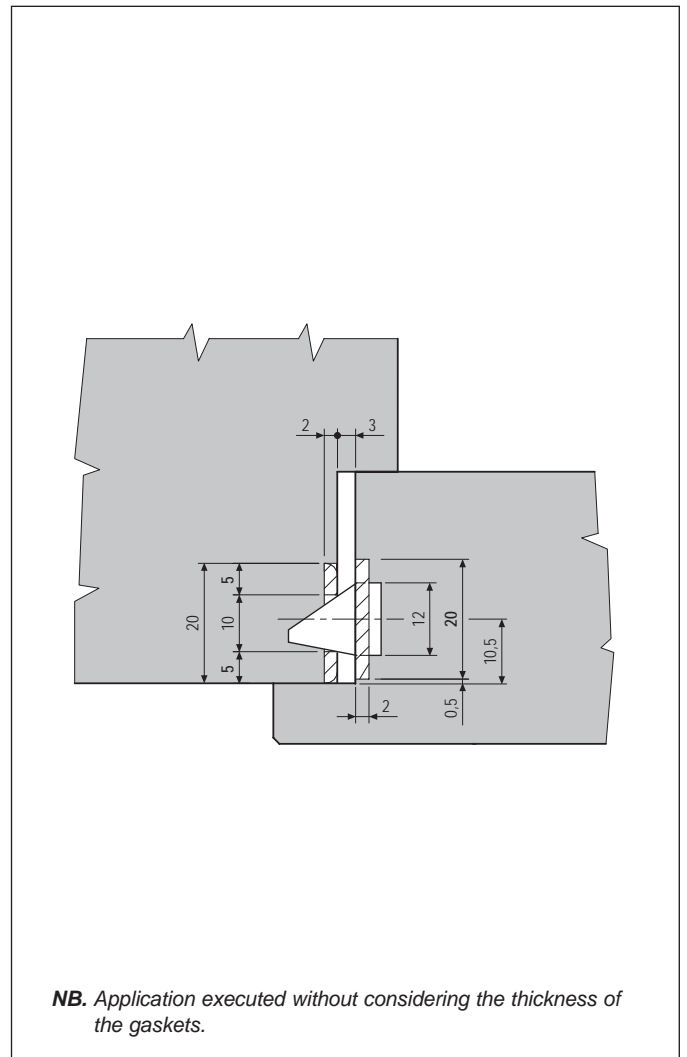
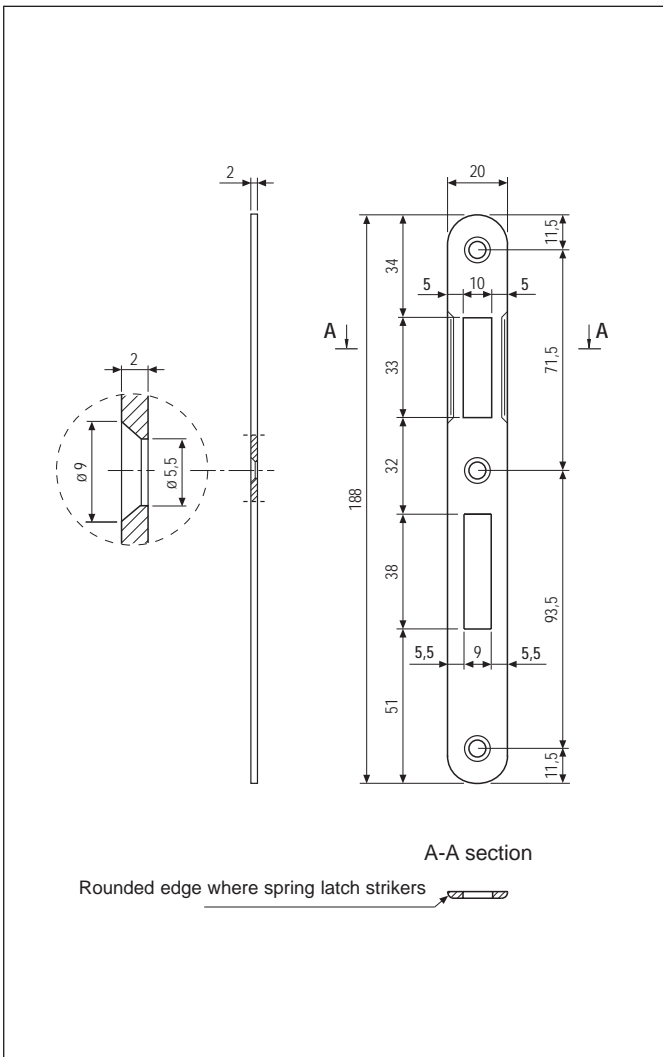
Steel or brass striker with round ends. Dimensions match lock forend: 20 mm wide - 188 mm long. The edge is bevelled where the spring latch strikers for easier and smoother closing of the door. Suitable for both right and left-handed applications.

Application

Used in combination with a Patent Piccola lock, on interior rebated doors with timber frame.

Mounting

Mill the frame according to the dimensions shown in the diagram. Install the striker flush with the edge of the frame. Fasten with three 4x25 mm screws.



Order Specifications

Material	SALES CODE		
	Ref.	Model	Finish code
STEEL	B00570	01	XX
BRASS	B00570	02	XX

NB. Refer to the price list in force to check the availability of the finishes.