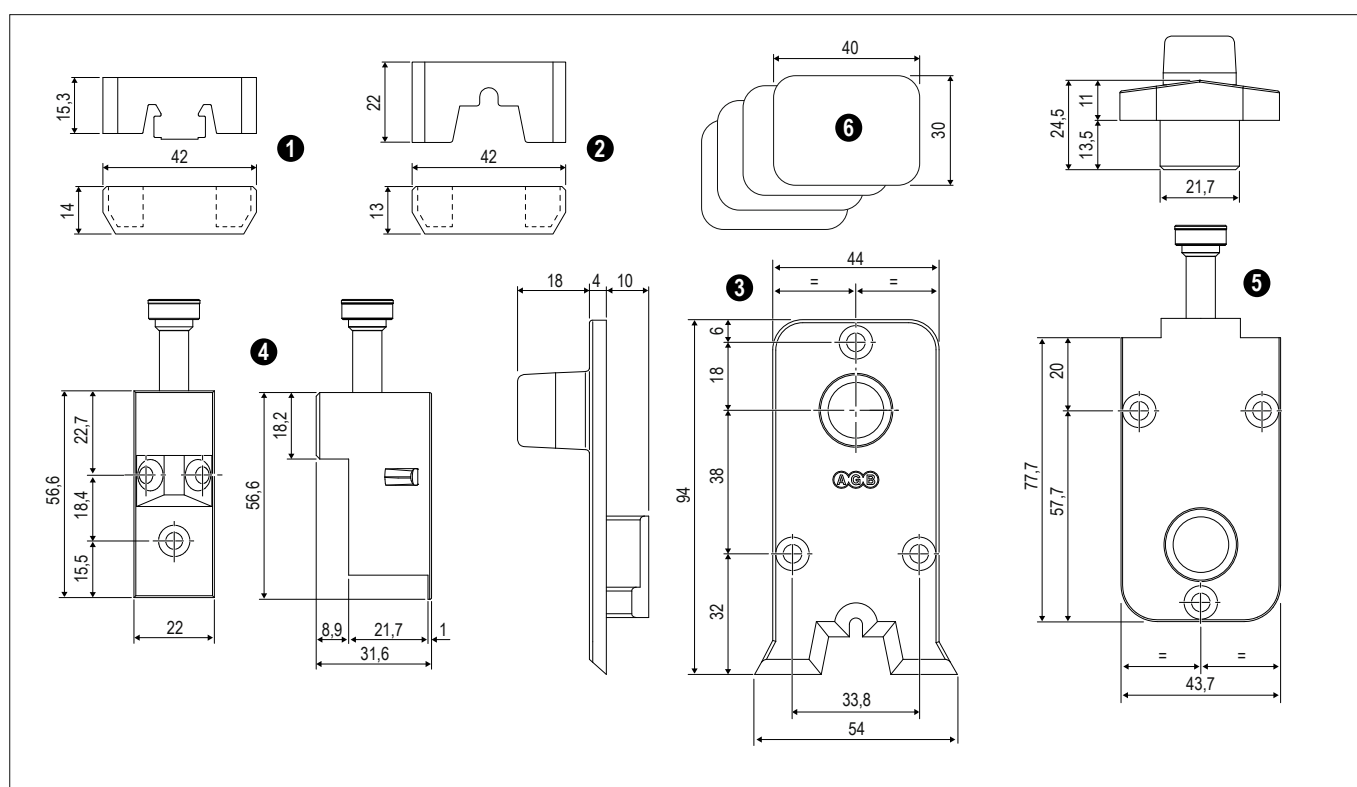
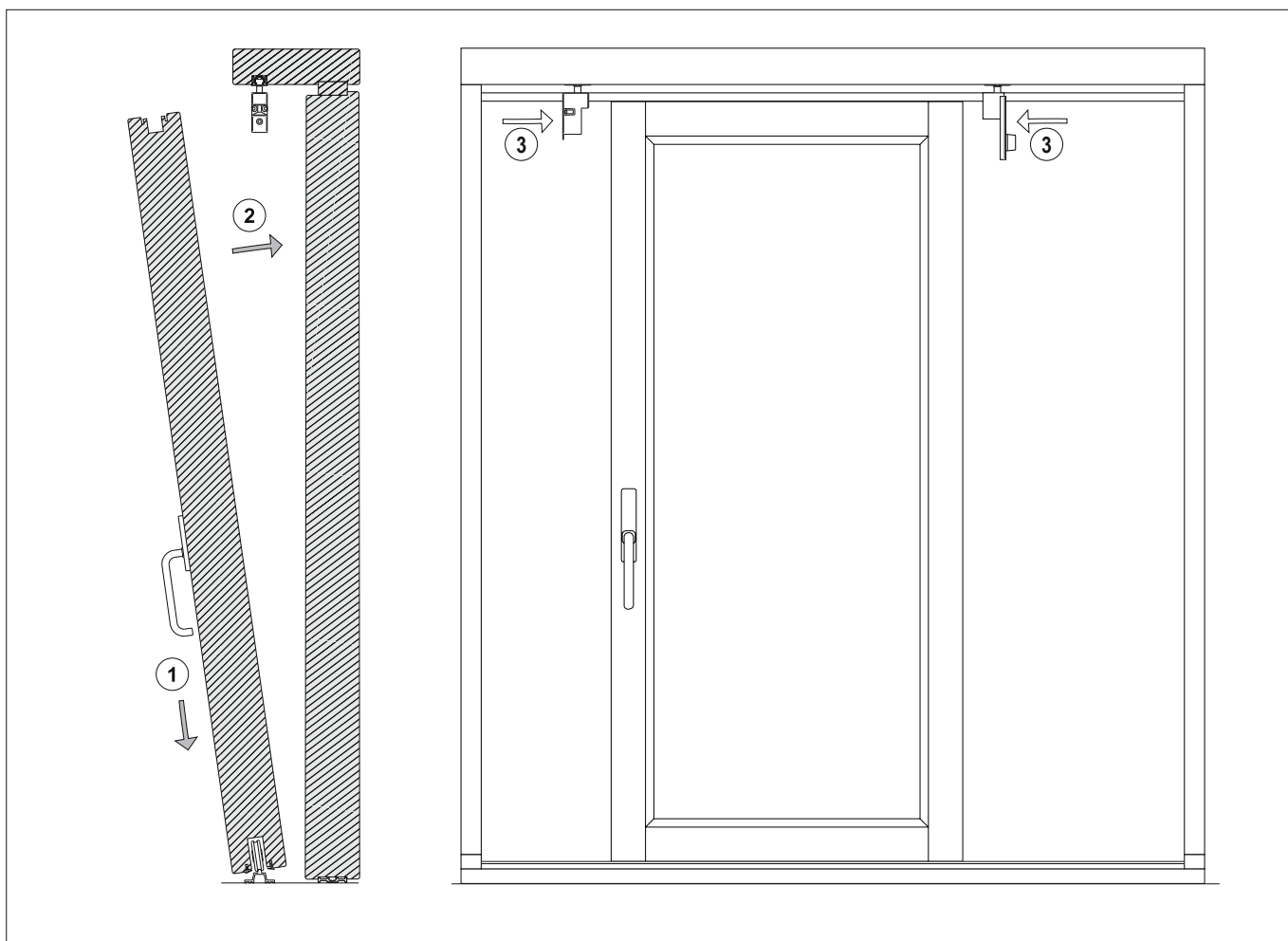


Caps kit for embedded upper guide 22x13 - high rail

Article	Ref.	Description	Material	Use	Fastening
Shaped cap for C track 22x13	❶	Cap to be inserted between the locking profile and the guide.	Rubber	To be jointed.	To be inserted with silicone.
Shaped cap for lower rail	❷	To guarantee the system tightness.	Rubber	Apply under the profile with silicone on the back.	
Rear lower covering cap	❸	Cap to close the hardware groove on the lower transom, in the sash extremity.	Plastic material	-	4x30 mm screws.
Cap and glider for front upper guide	❹	Glider for the sash sliding on the concealed guide; the plastic glider is used as covering cap of the upper milling.	Plastic material	Place in the slot between sash and frame.	4x30 mm screws.
Cap and glider for rear upper guide	❺				
2 mm adapter for fixed sash	❻	Adapter for the fixed sash fastening.	Plastic material	-	To be inserted.



Caps kit for embedded upper guide 22x13 - high rail



- ① Place the sash on the rail with the carriages in opening position;
- ② Place the sash in vertical position;
- ③ Fasten the gliders on the sliding sash.

Article	Grey RAL 7038	Black
Caps kit for embedded upper guide 22x13 (Imago) - High rail	G00223.10.86	G00223.10.93