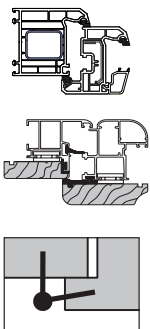


Mod. COMPOSIT

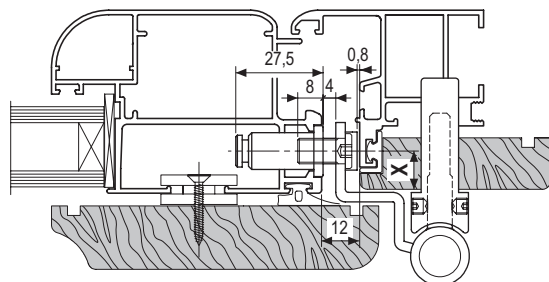
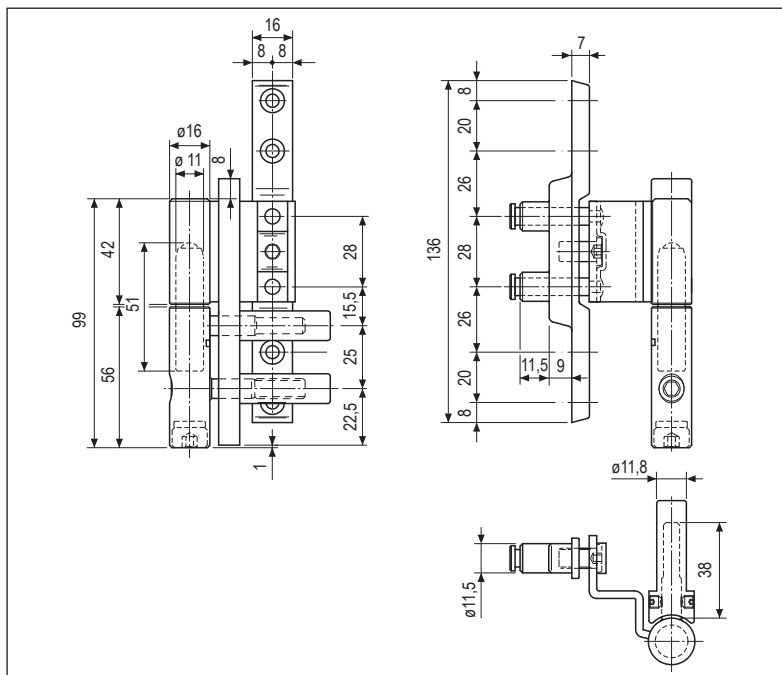


Description

Adjustable hinge made of galvanised steel, 16 mm diameter, fitted with sturdy 12 mm supporting pins on both male and female bodies. M8x38 adjusting pin, female neck on versions for profiles with 9, 12 and 26 mm distance between centres.

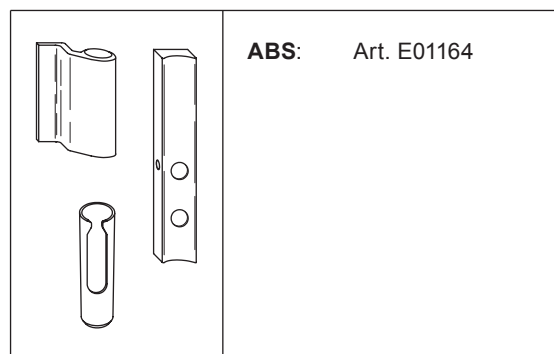
Adjustments: three-dimensional adjustment possible (horizontal, vertical and depth) using an a 5 mm Allen wrench.

- 1 Horizontal adjustment: 2 mm when pushing and 4 mm when pulling, through the special dowel fitted in the female body (to hold the sash perfectly plumb); the hinge is supplied preset for gap 12 mm.
- 2 Depth adjustment: 1,5 mm when pushing and 4 mm when pulling, through the special dowel fitted in the male body (to apply the proper pressure to the gasket).
- 3 Vertical adjustment: 6 mm. The thrust is applied through two steel pivots and one brass bush, ensuring easy adjustment of any sash, including heavy ones.



Axis X = 9 mm / 12 mm / 26 mm

Available covers



Order specifications

Material	Article	Type	Axis
STEEL	E00164.08.01	rh	9
	E00164.08.02	lh	9
	E40164.08.01	rh	9
	E40164.08.02	lh	9
	E00164.10.01	rh	12
	E00164.10.02	lh	12
	E40164.10.01	rh	12
	E40164.10.02	lh	12
	E00164.40.01	rh	26
	E00164.40.02	lh	26

Note. For complete dimensions and codes, see the "Covers" chapter.

INSTALLATION TOOLS ("Jigs" chapter)

- Guide tool kit article code E01500.00.10
- Single jig for frame drilling article code E01500.00.06
- Single jig for sash drilling article code E01500.00.11

Note. Refer to the price list in force to check the availability of the finishes.

